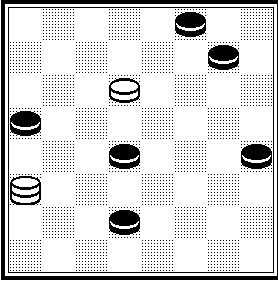
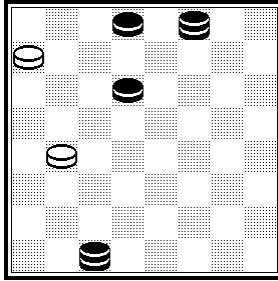
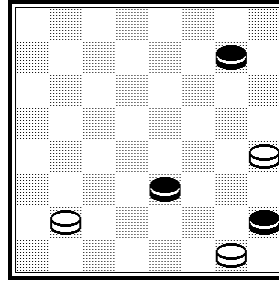
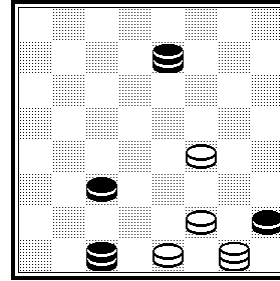
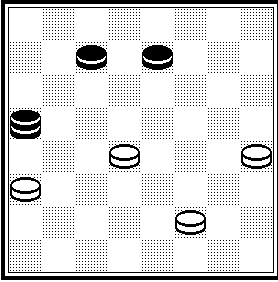
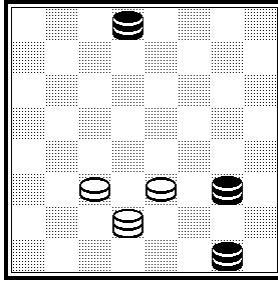
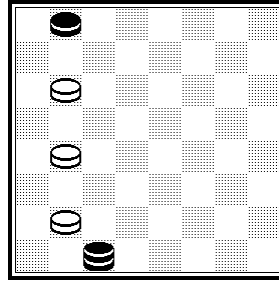
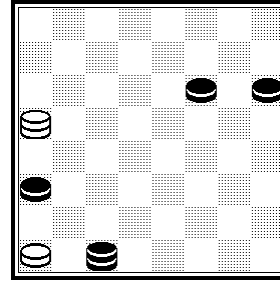


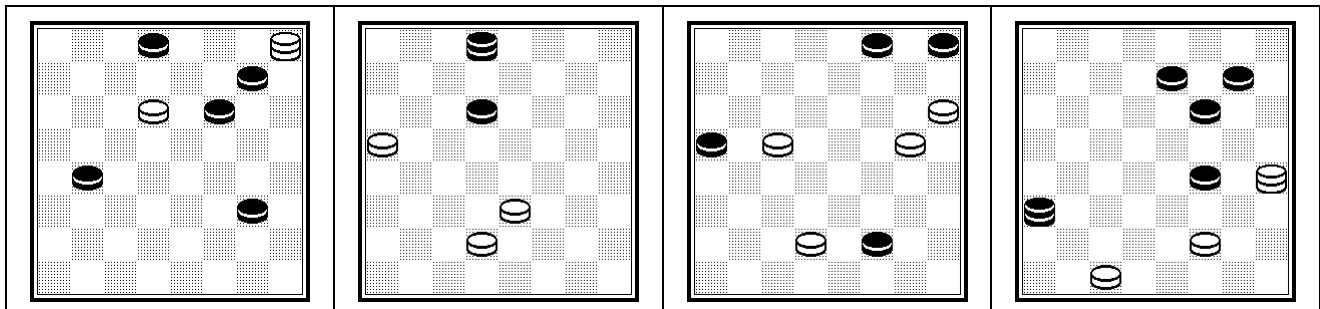
# International competition for draughts composition "Dnepr-2016"

## Category C

Etude-64

- 1) Setting a draw,
- 2) The balance of forces of the parties to the relevant etudes or minietudes.

1	2	3	4
			
<p>1. e7, c1 (b4 A), d2 (dc3), e1= A (c3), a3 (g3), d6 (h2/f2), e5=                  2. b8 (c7 A B C), c5, a3 ch6 (VP1), I b2= A (a3), h2 (c5), e5= B (c5), d6, e5= C (e5), g3/h2, e5= VP1 (cf4), II b2= I c1? a3+ II c1? f8h6+                  3. g5 (d2), f2 (g1 A), h6, f8= A (h6), g3 (h6f4), e5 (c1), f6, g7 (g1), I h8= I f8? (gc5)+                  4. g3 (h6), ef2, h2=</p>			
5	6	7	8
			
<p>5. I c5 (d2 A), b4, b6 (cd6), a7 (b6), c5, g5 (c3), h6 (f6), II g3 (b2), f4 (g5 B), g7, f8= A (cd6), III g5, c5 (d8), h6 (d6), e7, g7 (c3), f8= B (a1), e5, g7 (dc3), f8= I g5? (cb6), h6 (c5), b6 (c7), I-A g7 (f6), e5 (e1)+ I-A b4 (f6), e3 (ce5), a5 (h2), b6 (g5), f4 (a5)+ II e3? (g5), f4 (b2) – Блонд + III e3?, c5 (d8), g5 (d6), e7 (h4)+                  6. I II III ed4 (a7 A B), c1 (e5 C D), b2 (dc7 E F G), a1, b8= A (c5) I-1, h6 (e5/f6, H), f8 (b2), c1= H (f8) b4, g7= B (b6), c1 (f6 E1), b2 (h2 J K L M N O), a1, a7 (g1), b8= E1 (e5), b2 (bd4 N1), a1, g7/h8= J (a5), a1 (b2), g1= K (e1), a1 (b2), a7= L (bd8), a1, h2= M (a7), a1, h2 (b8), g1= N (gh4), a1, a7= O (g1), a1, h2= N1 (h4), a1, a7= C (f6), b2 (fe5 VP2, E1, P, Q, O1), a1, h2 (b8), g1= VP2 (c7), a1, b8= E1 (ge5), a1, g7/h8= P (ab8), a1, h2= Q (gf2), a1, g1= O1 (g1), a1, h2= D (ab8), b2 (be5 P1), a1, h2= P1 (df6), a1, h2= E (ad4/df6), a1, g7/h8= F (f2), a1, g1= G (ab6), a1, a7+ I b4? (a3), c3 (b4), e1+ II cd4? (g1f2), g1 (e5), f6 (c1)+ III e1? (a1/b2), h4 (a/bf6)+ I-1 b4? (a3), c3 (b4), a5 (e1)+                  7. I c3 (a3 A), a5 (b4), d4 (c5), e5, d6 (d4), b6, e7+ A (a7), a5, d4, b6 (a3), c7= I a3? (d2), a5 (e3), a7 (g5), b4 (d8), c5 (dc7)+                  8. I b2 (fg5 ABC), b6 (h4 DE), c3 (cg5), a7 (f4), g1 (hg3), b4, a7 (e5), b8= A (e5), c7 (cf4 G), a5, c3= B (hg5), ac3= C (d2), e1, c3= G (d4), b6 (ce3), d8, f6= D (cf4), f2, h4= E (d2), a5, e1 (b2), g3= I c3? (cb2), h8 (c3)+</p>			
9	10	11	12



9. e7 (c7 A B), g5 (h6), hf6, h4 (a3 C), e1 (b2), a5 (d6), b4 (e5), I a3 (c1 D), f8 (b2 E), a3 (bd4), c1 (g3), f4=

A (a3), g5 (h6), gf6 (f2), e7, g1= B (h2), g5 (h6), gf6 (g1), e7, a5= C (h2), g3 (e3), b8 (c3), e5= D (a1), c1 (g3), f4= E (ce3), g7 (e3d4), h6 (g3), f4=

I d2? (c1), h6 (ef4)+

10. I II f4 (f6), III g5, b6 (c5 A B), d4 (e1), e3 (g3), c5 (h2 C), b6 (g1), a7, b8=

A (f2), a7 (g3), c3/e3 (h2), d4 (c5), b6 (b8), c7 (d6), b8 (h2), a7=

B (g3), IV a7 (h2), e3/c3 (g3), d4 (f4 B1), c5, b8 (h2), a7=

C (b8), b6 (a7), c7= B1 (c5), b6 (b8), c7 (d6), b8 (h2), a7=

I d4? (e5), f6 (c1), b6 (f4), a7 (b8)+

II c3? (c5), f4 (c7), g5 (d4), e5 (h6), b6 (f4), a7 (b8)+

III b6? (c5), d4 (e1)+ IV e3? (c5), d4 (d6)+

11. d6 (e1), c7 (c3 A), b8 (b2 B), d6(a3), g3 (ae7), h4 (c5), f6 (ab4 C), e1(a3), c3=

A (b4), f6 (e1), hg7, e7= B (e1), c7 (c3 D), g3 (e1 E), c7=

C (a3), e1 (c1), c3= D (ab4), f6, a3, hg7, e7 (b2), ed8 (a1), b8=

E (cb4 F), f6= F (ab4) e1=

12. b2, e3, e1 (h6 A B), h8=

A (d6), I h4= B (g5), II h8=

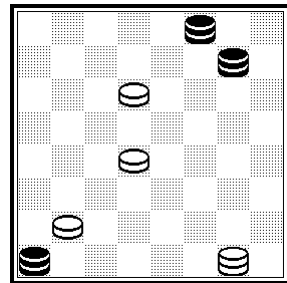
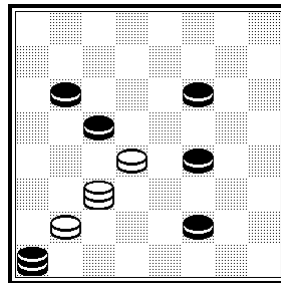
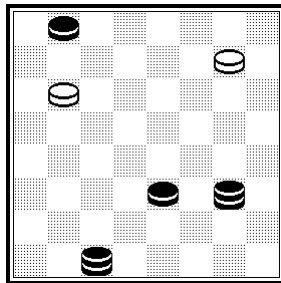
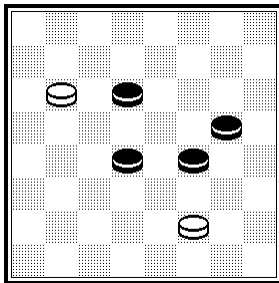
I h6? (fg5)+ II f4? (g5/h6)+

13

14

15

16



13. a7 (de3 A), d4 (g3), c5, b8 (h2), d6 (a3 B), e7 (h4 C), f6=

A (c5), b8 (fe3), e5 (g1 D), c3/a1=

D (f6), b6= B (f4), a3= C (f4), f6=

14. f8 (gf2 A B C D E), c7, b4 (b2 F F1), a3 (a1 G G1), c1=

A (a3), c7, h4= B (ed2), c7, h4= C (h4/e1), c7, g1= D (e5), c7= E (ef2), c7, g1=

F (h4), I c5 (ed2), d4= I c3? (cd2), e1 (ef2)+ F1 (e1), c5 (e3d2), d4=

G (c3), c1 (cd2), b2= Remark:a3 (c3) – the reiteration delays the solution

G1 (g7), f8 (c3 G2, G3), h6 (d2 H), g7= Remark:f8 (c3) – the reiteration delays the solution

H (fe1), a5=

G2 (b2), a3 (c3), c1 (cd2), b2= Remark:a3 (c3) – the reiteration delays the solution

G3 (e5), h6 (f4), g7= Remark:f8 (e5) – the reiteration delays the solution

15. e5 (e5 A), g1 (ed4), h2=

A (e3), a:g:e1 (d4 B C), h4 (fe5), g3= B (e5), h4=C (c3), b4/a5=

16. e5 (c1 A B C), d6 (c3 D), I II III b6 (a5 E F), dc7 (c3 G), d8, e1=

A (f6), c7 (d6), e5 (d4), c5/a7= B (c3), d4 (e3 H), c5/a7= H (b8), f2/a7= C (d4), a7 (b8), b6/g1=

D (a3), c7 (d6), e5 (d4), c5/a7= E (a3), IV a5 (e7), d2/e1= F (b4), dc7 (a5), d8= G (d2), d8, e1+

I e7? (e3), b2 (d8)+ II c7? (e3), b2 (b8)+ III a7? (a3), c7 (c5), b2 (b8)+

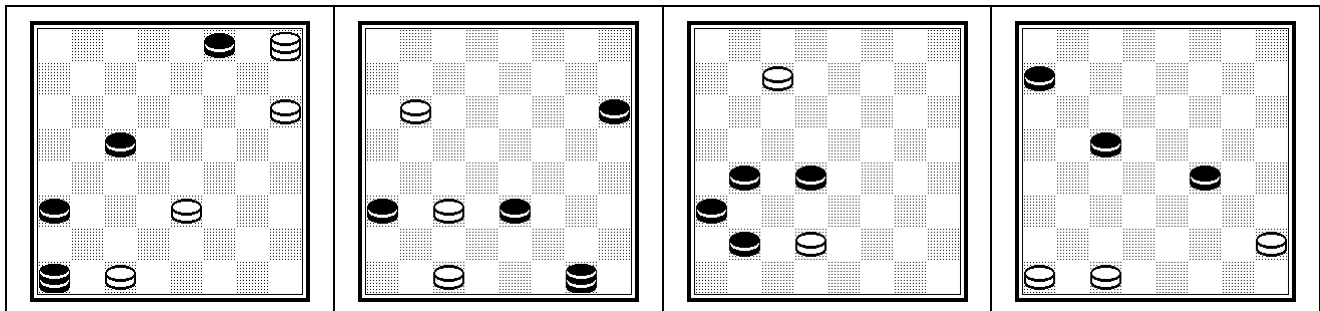
IV dc7? (c5), b2 (b8)+

17

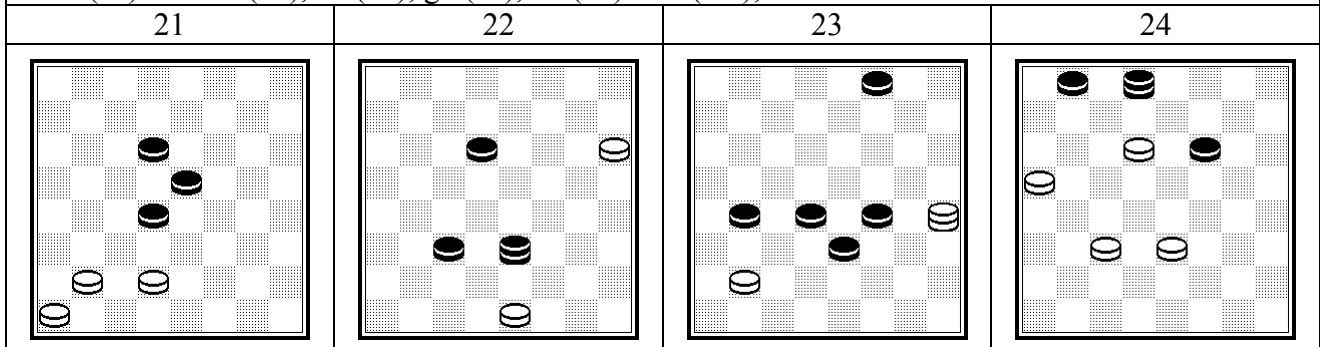
18

19

20

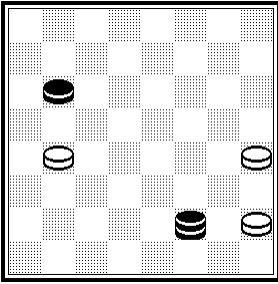


17. d2 (a3b2), hd4 (b4), f4 (c1), d2c3 (g5 A), f4, h8 (c1/e1), fe5=  
 A (d2), h8 (e1), fe5=  
 18. c7 (ef2), d8 (h2), b6 (fg1), a7 (b2 A), a3 (f4 B), cd4, g5, b4=  
 A (f4), d2, cd4, d4= B (e5), ab4 (a1), bc5=  
 19. d8 (a1 A), h4 (ac3 B C D), f6, a5=  
 A (c1), a5= B (a3b2), e3, a5=  
 C (dc3), e3 (c3b2), g5 (c1), h6= D (bc3), b4, e7=  
 20. ab2 (d4), c3, a3 (e3 A), b4 (d2 B), c5 (e1 C), d6 (h4), g3, e7=  
 A (b6), b4 (e3), g3 (d2), f4 (e1), e5/g5, f6 (b4), g7 (b6c5), I h8=  
 B (b6), b4 (e3), g3 (d2), f4 (e1), e5/g5, f6 (b4), g7 (c3), f8=  
 C (c1), d6 (g5), II hg3 (b6 D), f4 (c1), e7 (c5), III d8= D (h4), c7=  
 I f8? (a3)+ II c7? (b6), a5 (d8), g3 (c7), h4 (d8)+ III (f8?), a3+



21. bc3, c3 (f4), I b4 (g3), a5 (h2 A), b6 (g1), a7 (h2), c3/e3 (g3), II d4 (f4), III c5, b8=  
 A (f2), e3, b6=  
 I d4? (g3), e3 (h2), f4 (g1), e5 (h2), c7 (b8)+ II b4? (c5), d6 (b8)+ III e5? (g3), c7 (b8)+  
 22. g7 (e5 A B), h8 (e5d4 C), g7 (c1), h6 (a3 D), g7 (f8), h8 (h6 E), f6 (c1), g7 (h6), f6 (hd2), g7  
 (dh6), f6= (reiteration)  
 A (b2), f8 (e5 F), g7 (e3d4), f2=  
 B (dc5), h8 (cd4), g7 (g5), h6 (d8 G), c1 (c7), a3 (a5 H), c1 (c7), a3= (reiteration)  
 C (e3d4), f2= D (c3-b2), ed2= E (e7), d2= F (ec5), f2+  
 G (h4), c1 (d8), a3 (h4), c1= (reiteration) H (f4), c1 (h6 J), f2 (f8), ce3=  
 J (d6), a3 (f8), c1 (a3), h6 (c1), g7 (h6), f6 (hd2), g7 (dh6), f6= (reiteration)  
 23. a3 (g7 A), c5, e1 (h6 BCD), a5 [Balzhalarsky S., 1933] (c5), c7 (g3 VP1), h2 (d4), g3 (d2), f2  
 (c3), e1 (g5), h4 (f4), f6=  
 A (bc3), e1 (g7), a5 (f2 E), a3b4 (e1), c5, h2= B (f6), c3 (g5), a5 (c5), d8 (h4 F), e7 (d4), f6=  
 C (a5), c3 (h6), e1 (g5), h4=  
 D (c5), c3 (h6), d4 (b4), g1 (c3), h2 (e3), e5=  
 E (g3), a3b4 (gf2 A1), c5, c7 (e1), e5=  
 F (d2), h4 (e1), f6=  
 VP1 (d4), g3 (d2), f2 (c3), e1 (g5), h4 (f4), f6= A1 (ef2), c5, h2=  
 24. e7 (a7 A), g5, cd4 (g3 BC), b6, b6 =  
 A (bc7), g5, I II ed4 (d8 D), III e5 (e7), IV d4 (d8), V b6, VI d6 = D (e7), e5 (d8), VII b6, d6+  
 B (f6), VIII b6 (c3), c7 (b6, e5), b6 = C (g5), e5, f6=  
 VIII c5? (e5), d4, d6 (f6), c7 (e7)+  
 I f4? (f6), b4 (e7), e5, f6, f8+  
 II cd4? (d8), IX X c5 (d6)+ IX f4? (b6)+ X e5? (d6)+  
 III c5? (d6)+ IV b4?, f6 (f8)+ V c5? (d6)+ VI c5? (e7), ed6 (d8)+

25	25. g5 (h4 A), I h6 (f6), g3 (h8 B), II h4 (e5 C), g5 (h8), f6, b2 =
----	--



A (d4), III c5 =

B (a1), c5, g7=

C (a1), c5, g7=

I a5? (d8)+

II f4? (a1), c5, g7 (e3, h8)+

III h6? (h8), g3 (f6), h4 (h8), g5 (e5)+